

**EXCHANGE YOUR MIND**

**HOW  
TO PARTECIPATE TO THE MOBILITY PROGRAM**



# WHO?

## **ANY STUDENT**

BOTH ITALIAN AND FOREIGN STUDENTS  
REGULARLY ENROLLED AT POLIMI

BSc STUDENTS (LAUREA)  
MSc STUDENTS (LAUREA MAGISTRALE)

**STUDENTS ENROLLED IN INDIVIDUAL COURSES (CORSI SINGOLI) WAITING TO ENTER  
IN THE MSc**

# WHEN YOU CAN APPLY?

	YEAR	STUDY COURSE	EXCHANGE PERIOD		EXCHANGE PROGRAM
<b>BSc STUDENTS</b>	<b>1<sup>st</sup></b>	PRODUCT INTERIOR FASHION COMMUNICATION	<b>2<sup>nd</sup> YEAR</b>	<b>1<sup>st</sup> SEMESTER and / or 2<sup>nd</sup> SEMESTER</b>	ERASMUS EXTRA EU
	<b>2<sup>nd</sup></b>	PRODUCT INTERIOR FASHION COMMUNICATION	<b>3<sup>rd</sup> YEAR</b>	<b>2<sup>nd</sup> SEMESTER / FULL YEAR*</b>	ERASMUS EXTRA EU MEDES
	<b>3<sup>rd</sup></b>	PRODUCT FASHION COMMUNICATION	<b>1<sup>st</sup> YEAR MSc</b>	<b>2<sup>nd</sup> SEMESTER</b> <small>ONLY IF THERE IS CONTINUITY FROM BSc TO MSc EX: FROM BSc PRODUCT -&gt; TO MSc INTEGRATED PRODUCT</small>	ERASMUS EXTRA EU
<b>MSc STUDENTS</b>	<b>1<sup>st</sup></b>	INTEGRATED PRODUCT INTERIOR AND SPATIAL FASHION SYSTEM COMMUNICATION PSSD DESIGN&ENGINEERING DIGITAL&INTERACTION	<b>2<sup>nd</sup> YEAR</b>	<b>2<sup>nd</sup> SEMESTER and / or 1<sup>st</sup> SEMESTER (INTERIOR AND SPATIAL DESIGN, DIGITAL &amp; INTERACTION ONLY)</b>	ERASMUS EXTRA EU DOUBLE DEGREE

\* FULL YEAR AVAILABLE FOR MEDES PRODUCT, INTERIOR AND COMMUNICATION ONLY!

BSc = BACHELOR OF SCIENCE // LAUREA TRIENNALE    MSc = MASTER OF SCIENCE // LAUREA MAGISTRALE

# WHAT?

## APPLYING IN THE BSc 1<sup>ST</sup> YEAR

### ERASMUS AND EXTRA EU

#### EXCHANGE PERIOD

AT LEAST **ONE SEMESTER** UP TO **12 MONTHS**.

#### WHEN YOU CAN LEAVE

YOU CAN DO **YOUR PERIOD ABROAD** IN **THE 1<sup>ST</sup> AND/OR 2<sup>ND</sup> SEMESTER** OF **BSc 2<sup>ND</sup> YEAR**.

THIS APPLICATION IS THE ONLY ONE THAT ALLOWS YOU TO STAY ABROAD TWO SEMESTERS INSTEAD OF ONE.

# WHAT?

## APPLYING IN THE BSc 2<sup>ND</sup> YEAR

### ERASMUS AND EXTRA EU

#### EXCHANGE PERIOD

AT LEAST **ONE SEMESTER** UP TO **12 MONTHS** **WITHIN EU**.

#### WHEN YOU CAN LEAVE

YOU CAN DO **YOUR PERIOD ABROAD** IN **THE 2<sup>ND</sup> SEMESTER** OF **BSc 3<sup>RD</sup> YEAR**.

### MEDES

#### EXCHANGE PERIOD

**EXCELLENCE PROGRAM** WITH **2 YEARS** OF EXCHANGE AT **BSc 3<sup>RD</sup> YEAR AND MSc 1<sup>ST</sup> YEAR**. (IT IS **DIFFERENT** FROM **DOUBLE DEGREE PROGRAM**.)

AVAILABLE TO STUDENTS IN THE 2<sup>ND</sup> YEAR IN: **PRODUCT-COMMUNICATION-INTERIOR DESIGN**

YOU CAN FIND THE PARTNER SCHOOLS AND MORE DETAILS **BELOW IN THIS DOCUMENT**.

# WHAT?

## APPLYING IN THE BSc 3<sup>RD</sup> YEAR

### ERASMUS AND EXTRA EU

**EXCHANGE PERIOD**  
MAXIMUM **ONE SEMESTER**

**WHEN YOU CAN LEAVE**  
YOU CAN DO **YOUR PERIOD ABROAD**  
IN **THE 2<sup>ND</sup> SEMESTER OF MSC 1<sup>ST</sup> YEAR.**  
**ONLY IF YOU WILL ATTEND THE MSC IN**  
**CONTINUITY WITH THE BSC.**

**INTERIOR STUDENTS CAN NOT APPLY**  
**THIS YEAR!**

STUDENTS THAT WILL ATTEND THE  
**MSC IN FASHION CAN APPLY TO THE**  
**EXCHANGES AT FIT AND PHILA U.**

EXAMPLES OF CONTINUITY:  
BSc PRODUCT > MSC INTEGRATED PRODUCT  
BSc COMMUNICATION > MSC COMMUNICATION

# WHAT?

## APPLYING IN THE MSc 1<sup>ST</sup> YEAR

### ERASMUS AND EXTRA EU

#### EXCHANGE PERIOD

AT LEAST **ONE SEMESTER** UP TO **12 MONTHS**.

#### WHEN YOU CAN LEAVE

**INTERIOR STUDENTS AND DIGITAL& INTERACTION** CAN DO THEIR **PERIOD ABROAD** IN THE **1<sup>ST</sup> AND/OR 2<sup>ND</sup> SEMESTER** OF **MSC 2<sup>ND</sup> YEAR**.

#### ALL THE OTHER COURSES

YOU CAN DO **YOUR PERIOD ABROAD** IN THE **2<sup>ND</sup> SEMESTER** OF **MSC 2<sup>ND</sup> YEAR**.

IT IS YOUR **LAST CHANCE** TO DO YOUR EXCHANGE PROGRAM!

### DOUBLES DEGREES

PROGRAMS TO OBTAIN A

#### **DOUBLE DEGREE.**

(POLIMI & PARTNER SCHOOL DIPLOMA)

#### **DOUBLE DEGREE PARTNER SCHOOLS:**

TSINGHUA UNIVERSITY, China

TONGJI UNIVERSITY, China

XI'AN JIAOTONG UNIVERSTITY, China

LES ECOLES CENTRALES, France

UNIVERSIDADE DE SÃO PAULO, Brasil

PONTIFICIA UNIVERSIDAD CATOLICA DE CHILE

UNIVERSIDAD NACIONAL DE COLOMBIA

# WHAT?

## APPLYING IN THE MSc 2<sup>ND</sup> YEAR

### ERASMUS TRAINEESHIP

YOU HAVE THE CHANCE TO DO YOUR **TRAINEESHIP** PERIOD IN A EUROPEAN COUNTRY.

THE CALL IS NOT THE SAME AS THE ERASMUS PROGRAM.

YOU CAN PARTICIPATE ANSWERING **A SPECIFIC CALL IN MAY.**

AVAILABLE PLACES ARE LIMITED.

<http://cm.careerservice.polimi.it/career-program/erasmus-for-traineeship/>



# WHAT IS THE JEFFERSON U PROGRAM?

## JEFFERSON U & POLIMI INTERNATIONAL MASTER IN FASHION DESIGN

WHO	MOBILITY SCHEME	WHEN
EACH YEAR  <b>25</b>  SELECTED STUDENTS	1 <sup>st</sup> YEAR 1 <sup>st</sup> SEM.   POLI 1 <sup>st</sup> YEAR 2 <sup>nd</sup> SEM.   <b>POLIMI STUDENTS AT JEFFERSON U</b> 2 <sup>nd</sup> YEAR 1 <sup>st</sup> SEM.   POLI 2 <sup>nd</sup> YEAR 2 <sup>nd</sup> SEM.   POLI	APPLICATION  <b>3<sup>RD</sup></b>  YEAR OF BACHELOR IN FASHION

IF YOU WISH TO APPLY THIS PROGRAM MAKE SURE TO INDICATE IT AS THE FIRST PREFERENCE!!

REMEMBER THAT TO APPLY TO THE 1<sup>ST</sup> MS<sub>c</sub> AT POLIMI YOU NEED THE ENGLISH CERTIFICATE !!

FOR MORE INFORMATION COME TO THE PRESENTATION

> 27<sup>TH</sup> NOVEMBER | 13.15 - 14.15 | ROOM B2.1.11 <

# WHAT IS THE FIT PROGRAM?

## FASHION INSTITUTE OF TECHNOLOGY IN NEW YORK

WHO	MOBILITY SCHEME	WHEN
EACH YEAR  <b>5</b>  SELECTED STUDENTS	1 <sup>st</sup> YEAR 1 <sup>st</sup> SEM.   POLI 1 <sup>st</sup> YEAR 2 <sup>nd</sup> SEM.   <b>POLIMI STUDENTS AT FIT</b> 2 <sup>nd</sup> YEAR 1 <sup>st</sup> SEM.   POLI 2 <sup>nd</sup> YEAR 2 <sup>nd</sup> SEM   POLI	APPLICATION  <b>3<sup>RD</sup></b>  YEAR OF BACHELOR IN FASHION

IF YOU WISH TO APPLY THIS PROGRAM MAKE SURE TO INDICATE IT AS THE FIRST PREFERENCE!!

REMEMBER THAT TO APPLY TO THE 1<sup>ST</sup> MS<sub>c</sub> AT POLIMI YOU NEED THE ENGLISH CERTIFICATE !!

FOR MORE INFORMATION COME TO THE PRESENTATION

> 27<sup>TH</sup> NOVEMBER | 13.15 - 14.15 | ROOM B2.1.11 <

# WHAT IS THE MEDES PROGRAM?

## MASTER EUROPEAN DESIGN

STUDENTS APPLYING TO THE MEDES PROGRAM APPLY FOR A **2 YEARS MOBILITY**

WHO	WHEN	WHERE																				
EACH YEAR UP TO <b>6</b> SELECTED STUDENTS	<table><tbody><tr><td>1<sup>st</sup></td><td>YEAR</td><td>BSc</td><td>POLI</td></tr><tr><td>2<sup>nd</sup></td><td>YEAR</td><td>BSc</td><td>POLI</td></tr><tr><td>3<sup>rd</sup></td><td>YEAR</td><td>BSc</td><td><b>1<sup>st</sup> EXCHANGE</b></td></tr><tr><td>1<sup>st</sup></td><td>YEAR</td><td>MSc</td><td><b>2<sup>nd</sup> EXCHANGE</b></td></tr><tr><td>2<sup>nd</sup></td><td>YEAR</td><td>MSc</td><td>POLI</td></tr></tbody></table>	1 <sup>st</sup>	YEAR	BSc	POLI	2 <sup>nd</sup>	YEAR	BSc	POLI	3 <sup>rd</sup>	YEAR	BSc	<b>1<sup>st</sup> EXCHANGE</b>	1 <sup>st</sup>	YEAR	MSc	<b>2<sup>nd</sup> EXCHANGE</b>	2 <sup>nd</sup>	YEAR	MSc	POLI	GSA, GLASGOW KONSTFACK, STOCKHOLM ENSCI, PARIS UNIVERSIDAD DE AVEIRO, AVEIRO AALTO, HELSINKI KISD, COLOGNE
1 <sup>st</sup>	YEAR	BSc	POLI																			
2 <sup>nd</sup>	YEAR	BSc	POLI																			
3 <sup>rd</sup>	YEAR	BSc	<b>1<sup>st</sup> EXCHANGE</b>																			
1 <sup>st</sup>	YEAR	MSc	<b>2<sup>nd</sup> EXCHANGE</b>																			
2 <sup>nd</sup>	YEAR	MSc	POLI																			

IF YOU WISH TO APPLY THIS PROGRAM MAKE SURE **TO INDICATE IT AS THE FIRST PREFERENCE!!**

**ONLY STUDENTS SELECTING "MEDES PROJECT" AS A 1<sup>ST</sup> CHOICE WILL BE CONSIDERED FOR THE SELECTION PROCESS AND THUS FOR THE INTERVIEW**

FOR MORE INFORMATION COME TO THE PRESENTATION

> **4<sup>TH</sup> DECEMBER | 13.15 - 14.15 | ROOM B2.2.14** <

# WHAT IS A DOUBLE DEGREE PROGRAM?



## DOUBLE DEGREE PROGRAM

A DOUBLE DEGREE PROGRAM ALLOWS YOU TO SPEND TIME STUDYING ABROAD AND TO ATTEND COURSES USEFULL TO OBTAIN THE **ITALIAN DEGREE** AND A **FOREIGN DEGREE** OF THE SAME LEVEL.

# DOUBLE DEGREE PROGRAM

## TONGJI UNIVERSITY - SHANGHAI, CHINA

WHO	MOBILITY SCHEME	WHEN
<p>EACH YEAR</p> <p><b>24</b></p> <p>SELECTED STUDENTS</p> <p>PSSD INTERIOR PRODUCT COMMUNICATION DIGITAL&amp;INTERACTION</p>	<p>1<sup>st</sup> YEAR MSc 1<sup>st</sup> SEM. POLI</p> <p>1<sup>st</sup> YEAR MSc 2<sup>nd</sup> SEM. POLI</p> <p>2<sup>nd</sup> YEAR MSc 1<sup>st</sup> SEM. POLI</p> <p>2<sup>nd</sup> YEAR MS 2<sup>nd</sup> SEM. TONGJI COURSES, STAGE, THESIS</p> <p>3<sup>rd</sup> YEAR MSc 1<sup>st</sup> SEM. TONGJI</p> <p>+ thesis POLI</p>	<p>APPLICATION</p> <p><b>1<sup>ST</sup></b></p> <p>YEAR OF MASTER DEGREE</p>

FOR MORE INFORMATION COME TO THE PRESENTATION

> 2<sup>ND</sup> DECEMBER | 13.15 - 14.15 | ROOM B2.1.10 <

<http://www.design.polimi.it/it/area-internazionale/doppie-lauree/>

<http://www.design.polimi.it/en/international-area/doppie-lauree/>

# DOUBLE DEGREE PROGRAM

UNIVERSIDAD NACIONAL DE COLOMBIA - BOGOTA, COLOMBIA

WHO	MOBILITY SCHEME	WHEN
<p>EACH YEAR</p> <p><b>3</b></p> <p>SELECTED STUDENTS</p> <p>INTERIOR PRODUCT COMMUNICATION</p>	<p>1<sup>st</sup> YEAR MSc 1<sup>st</sup> SEM. POLI</p> <p>1<sup>st</sup> YEAR MSc 2<sup>nd</sup> SEM. POLI</p> <p>2<sup>nd</sup> YEAR MSc 1<sup>st</sup> SEM. POLI</p> <p>2<sup>nd</sup> YEAR MS 2<sup>nd</sup> SEM. UNAL COURSES, STAGE, THESIS</p> <p>3<sup>rd</sup> YEAR MSc 1<sup>st</sup> SEM. UNAL COURSES, STAGE, THESIS</p> <p>3<sup>rd</sup> YEAR MSc 2<sup>nd</sup> SEM. UNAL</p> <p>+ thesis POLI</p>	<p>APPLICATION</p> <p><b>1<sup>ST</sup></b></p> <p>YEAR OF MASTER DEGREE</p>

FOR MORE INFORMATION COME TO THE PRESENTATION

> 2<sup>ND</sup> DECEMBER | 13.15 - 14.15 | ROOM B2.1.10 <

<http://www.design.polimi.it/it/area-internazionale/doppie-lauree/>

<http://www.design.polimi.it/en/international-area/doppie-lauree/>

# DOUBLE DEGREE PROGRAM

## UNIVERSIDADE DE SÃO PAULO - SÃO PAULO, BRASILE

WHO	MOBILITY SCHEME	WHEN
<p>EACH YEAR</p> <p><b>5</b></p> <p>SELECTED STUDENTS</p> <p>PRODUCT COMMUNICATION</p>	<p>1<sup>st</sup> YEAR MSc 1<sup>st</sup> SEM. POLI</p> <p>1<sup>st</sup> YEAR MSc 2<sup>nd</sup> SEM. POLI</p> <p>2<sup>nd</sup> YEAR MSc 1<sup>st</sup> SEM. POLI</p> <p>2<sup>nd</sup> YEAR MS 2<sup>nd</sup> SEM. SÃO PAULO COURSES, STAGE, THESIS</p> <p>3<sup>rd</sup> YEAR MSc 1<sup>st</sup> SEM. SÃO PAULO COURSES, STAGE, THESIS</p> <p>3<sup>rd</sup> YEAR MSc 2<sup>nd</sup> SEM. SÃO PAULO</p> <p>+ thesis POLI</p>	<p>APPLICATION</p> <p><b>1<sup>ST</sup></b></p> <p>YEAR OF MASTER DEGREE</p>

FOR MORE INFORMATION COME TO THE PRESENTATION

> 3<sup>RD</sup> DECEMBER | 13.15 - 14.15 | ROOM B2.1.10 <

<http://www.design.polimi.it/it/area-internazionale/doppie-lauree/>

<http://www.design.polimi.it/en/international-area/doppie-lauree/>

# DOUBLE DEGREE PROGRAM

PONTIFICIA UNIVERSIDAD CATOLICA DE CHILE - SANTIAGO, CHILE

WHO	MOBILITY SCHEME	WHEN
<p>EACH YEAR</p> <p><b>2</b></p> <p>SELECTED STUDENTS</p> <p>PRODUCT COMMUNICATION FASHION</p>	<p>1<sup>st</sup> YEAR MSc 1<sup>st</sup> SEM. POLI</p> <p>1<sup>st</sup> YEAR MSc 2<sup>nd</sup> SEM. POLI</p> <p>2<sup>nd</sup> YEAR MSc 1<sup>st</sup> SEM. POLI</p> <p>2<sup>nd</sup> YEAR MS 2<sup>nd</sup> SEM. PUC COURSES, STAGE, THESIS</p> <p>3<sup>rd</sup> YEAR MSc 1<sup>st</sup> SEM. PUC COURSES, STAGE, THESIS</p> <p>3<sup>rd</sup> YEAR MSc 2<sup>nd</sup> SEM. PUC</p> <p>+ thesis POLI</p>	<p>APPLICATION</p> <p><b>1<sup>ST</sup></b></p> <p>YEAR OF MASTER DEGREE</p>

FOR MORE INFORMATION COME TO THE PRESENTATION

> 4<sup>TH</sup> DECEMBER | 13.15 - 14.15 | ROOM B2.2.10 <

<http://www.design.polimi.it/it/area-internazionale/doppie-lauree/>

<http://www.design.polimi.it/en/international-area/doppie-lauree/>



# DOUBLE DEGREE PROGRAM

## TSINGHUA UNIVERSITY - BEIJING, CHINA

WHO	MOBILITY SCHEME	WHEN
<p>EACH YEAR</p> <p><b>15</b></p> <p>SELECTED STUDENTS</p> <p>INTERIOR PRODUCT COMMUNICATION FASHION</p>	<p>1<sup>st</sup> YEAR MSc 1<sup>st</sup> SEM. POLI</p> <p>1<sup>st</sup> YEAR MSc 2<sup>nd</sup> SEM. POLI</p> <p>2<sup>nd</sup> YEAR MSc 1<sup>st</sup> SEM. POLI</p> <p>2<sup>nd</sup> YEAR MS 2<sup>nd</sup> SEM. TSINGHUA COURSES, STAGE, THESIS</p> <p>3<sup>rd</sup> YEAR MSc 1<sup>st</sup> SEM. TSINGHUA</p> <p>+ thesis POLI</p>	<p>APPLICATION</p> <p><b>1<sup>ST</sup></b></p> <p>YEAR OF MASTER DEGREE</p>

FOR MORE INFORMATION COME TO THE PRESENTATION

> 5<sup>TH</sup> DECEMBER | 13.15 - 14.15 | ROOM B2.3.1 <

<http://www.design.polimi.it/it/area-internazionale/doppie-lauree/>

<http://www.design.polimi.it/en/international-area/doppie-lauree/>

# DOUBLE DEGREE PROGRAM

## XI'AN JIAOTONG UNIVERSITY - XI'AN, CHINA

WHO	MOBILITY SCHEME	WHEN
<p>EACH YEAR</p> <p><b>3</b></p> <p>SELECTED STUDENTS DESIGN&amp;ENGINEERING</p>	<p>1<sup>st</sup> YEAR MSc 1<sup>st</sup> SEM. POLI</p> <p>1<sup>st</sup> YEAR MSc 2<sup>nd</sup> SEM. POLI</p> <p>2<sup>nd</sup> YEAR MSc 1<sup>st</sup> SEM. POLI</p> <p>2<sup>nd</sup> YEAR MS 2<sup>nd</sup> SEM. XJTU COURSES, STAGE</p> <p>3<sup>rd</sup> YEAR MSc 1<sup>st</sup> SEM. XJTU</p> <p>+ thesis POLI</p>	<p>APPLICATION</p> <p><b>1<sup>ST</sup></b></p> <p>YEAR OF MASTER DEGREE</p>

FOR MORE INFORMATION COME TO THE PRESENTATION

> 6<sup>TH</sup> DECEMBER | 13.15 - 14.15 | ROOM B2.2.11 <

<http://www.design.polimi.it/it/area-internazionale/doppie-lauree/>

<http://www.design.polimi.it/en/international-area/doppie-lauree/>

# DOUBLE DEGREE PROGRAM

## LES ECOLES CENTRALES - LYON/NANTES/PARIS, FRANCE

WHO	MOBILITY SCHEME	WHEN
EACH YEAR  <b>5</b>  SELECTED STUDENTS DESIGN&ENGINEERING	1 <sup>st</sup> YEAR MSc 1 <sup>st</sup> SEM. POLI  1 <sup>st</sup> YEAR MSc 2 <sup>nd</sup> SEM. POLI  2 <sup>nd</sup> YEAR MSc 1 <sup>st</sup> SEM. POLI  W YEAR MS 2 <sup>nd</sup> SEM. LES ECOLES COURSES, STAGE, THESIS  3 <sup>rd</sup> YEAR MSc 1 <sup>st</sup> SEM. LES ECOLES COURSES, STAGE, THESIS  3 <sup>rd</sup> YEAR MSc 2 <sup>nd</sup> SEM. LES ECOLES  + thesis POLI	APPLICATION  <b>1<sup>ST</sup></b>  YEAR OF MASTER DEGREE

FOR MORE INFORMATION COME TO THE PRESENTATION

> 6<sup>TH</sup> DECEMBER | 13.15 - 14.15 | ROOM B2.2.11 <

<http://www.design.polimi.it/it/area-internazionale/doppie-lauree/>

<http://www.design.polimi.it/en/international-area/doppie-lauree/>

# DOUBLE DEGREE PROGRAM

UNIVERSIDADE DE SÃO PAULO - SÃO PAULO, BRASILE

WHO	MOBILITY SCHEME	WHEN
<p>EACH YEAR</p> <p><b>3</b></p> <p>SELECTED STUDENTS DESIGN&amp;ENGINEERING</p>	<p>1<sup>st</sup> YEAR MSc 1<sup>st</sup> SEM. POLI</p> <p>1<sup>st</sup> YEAR MSc 2<sup>nd</sup> SEM. POLI</p> <p>2<sup>nd</sup> YEAR MSc 1<sup>st</sup> SEM. POLI</p> <p>2<sup>nd</sup> YEAR MS 2<sup>nd</sup> SEM. SÃO PAULO COURSES, STAGE, THESIS</p> <p>3<sup>rd</sup> YEAR MSc 1<sup>st</sup> SEM. SÃO PAULO COURSES, STAGE, THESIS</p> <p>3<sup>rd</sup> YEAR MSc 2<sup>nd</sup> SEM. SÃO PAULO</p> <p>+ thesis POLI</p>	<p>APPLICATION</p> <p><b>1<sup>ST</sup></b></p> <p>YEAR OF MASTER DEGREE</p>

FOR MORE INFORMATION COME TO THE PRESENTATION

> 6<sup>TH</sup> DECEMBER | 13.15 - 14.15 | ROOM B2.2.11 <

<http://www.design.polimi.it/it/area-internazionale/doppie-lauree/>

<http://www.design.polimi.it/en/international-area/doppie-lauree/>

# BEFORE THE CALL

## 1. GET INFORMED

ABOUT THE PARTNER SCHOOLS AND MAKE YOUR SELECTIONS!

### MANIFESTO

SELECT YOUR COURSE AND CLICK ON **INTERNATIONAL AREA SCHOOL**  
[CLICK HERE TO VISIT THE MANIFESTO OF YOUR COURSE](#)

*\*Partner school list will be updated in the next weeks*

### PARTNERS MAP

SELECT YOUR **POLIMI SCHOOL** AND THE **TYPE OF AGREEMENT**  
AND DISCOVER ALL THE PARTNER SCHOOLS.

<https://www.polimi.it/servizi-e-opportunita/studiare-allestero/mappa-delle-sedi-partner-e-accordi-di-mobilita/>

### INTERNATIONAL AREA SCHOOL

- CONSULT THE **PARTNER SCHOOLS LIST**  
- **READ THE REPORTS** FROM LAST YEARS STUDENTS

<http://www.design.polimi.it/en/international-area/international-mobility/>

<http://www.design.polimi.it/it/area-internazionale/mobilita-internazionale/>

### PARTNER SCHOOL

VISIT THE **PARTNERS SCHOOL WEBSITE**  
FOR MORE INFO

### CONTACTS

- THE **PROMOTER PROFESSORS** OF THE PARTNER SCHOOLS YOU'RE  
INTERESTED IN

- EXCHANGE OFFICE: [exchange-bovisa@polimi.it](mailto:exchange-bovisa@polimi.it)

- RELÉ OFFICE: [rele@polimi.it](mailto:rele@polimi.it)



# EXCHANGE YOUR MIND

MONDAY 25<sup>TH</sup> NOVEMBER  
13.00 - 14.30 // AULA CASTIGLIONI

GENERAL INFORMATION  
WHO, HOW, WHY **JOIN A MOBILITY PROGRAM**

FROM 26<sup>TH</sup> TO 29<sup>TH</sup> NOVEMBER  
13.15 - 14.15

PROF PROMOTERS PRESENT THE **PARTNER SCHOOLS**

FROM 2<sup>ND</sup> TO 6<sup>TH</sup> DECEMBER  
13.15 - 14.15

**DOUBLE DEGREE** PROGRAMS FOR MASTER STUDENTS

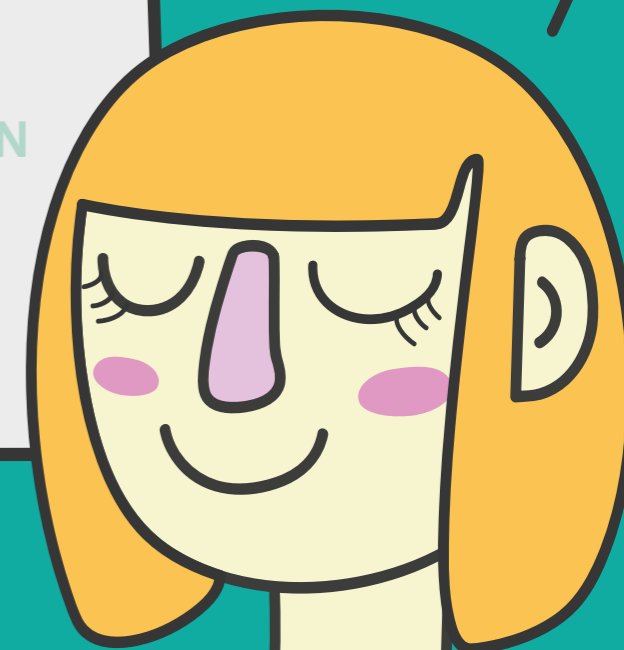
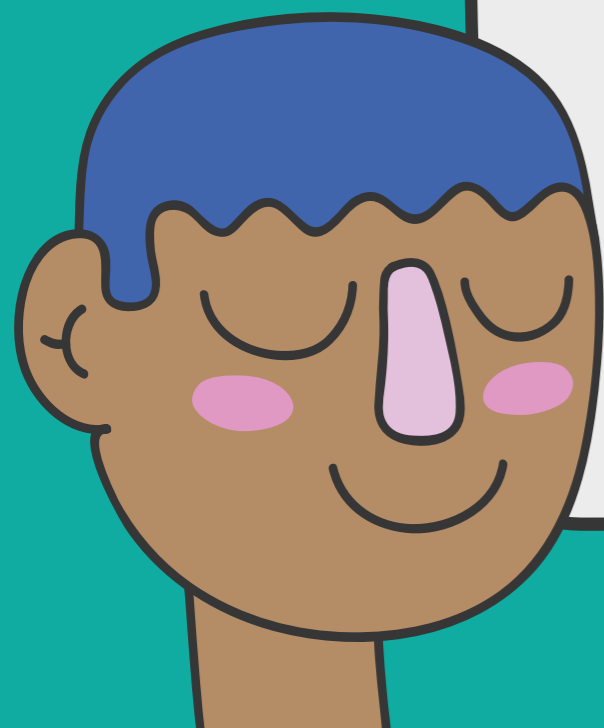
THURSDAY 5<sup>TH</sup> DECEMBER  
16.00 // B2 MAIN HALL

STUDENTS SHARE THEIR **EXCHANGE EXPERIENCE**

WEDNESDAY 11<sup>TH</sup> DECEMBER 12.15 - 14.00 ITALIAN

18<sup>TH</sup> DECEMBER 12.15 - 15.00 ENGLISH

SPECIAL MEETING ON **HOW TO ANSWER THE CALL**  
AULA CASTIGLIONI



# ANSWER THE CALL

## 2. ANSWER THE CALL

<https://www.polimi.it/en/services-and-opportunities/experience-abroad/study-mobility/erasmus/call/>

### RISPONDI AL BANDO

<https://www.polimi.it/it/servizi-e-opportunita/studiare-allestero/mobilita-per-studio/erasmus/bando/>

STUDENT THAT WISH TO APPLY FOR THE EXCHANGE PROGRAM AND THE DOUBLE DEGREE PROGRAM MUST PRESENT **TWO** DIFFERENT APPLICATIONS:

- FOR THE EXCHANGE PROGRAM INDICATING UP TO 10 PARTNER SCHOOLS
- FOR THE DOUBLE DEGREE PROGRAM INDICATING UP TO 5 PARTNER SCHOOLS

**YOU CAN APPLY FROM 3<sup>RD</sup> DECEMBER TO 9<sup>TH</sup> JANUARY**

DATES WILL BE PUBLISHED SOON ON :

<https://www.polimi.it/en/services-and-opportunities/experience-abroad/study-mobility/erasmus/call/>

<https://www.polimi.it/it/servizi-e-opportunita/studiare-allestero/mobilita-per-studio/erasmus/bando/>

# NECESSARY DOCUMENTS

## PORTFOLIO

**SHORT  
EXHAUSTIVE  
INCISIVE**

REMEMBER TO SPECIFY **THE CONTEXT** IN WHICH THE PROJECTS WERE IMPLEMENTED

**MAX 10 MB**

## CV

**YOUR CURRICULUM VITAE  
IN ENGLISH**

**MAX 2 MB**

## MOTIVATIONAL LETTER

**IN ENGLISH**  
THE MOTIVATIONAL LETTER HAS TO BE **SPECIFIC** FOR YOUR PROJECT OF MOBILITY



# POLIMI SELECTIONS

## 3. EVERY STUDENT WILL BE EVALUATED AND WILL RECEIVE A SCORE

-UP TO 66 POINTS FOR **DOUBLE DEGREE PROGRAMS**

-UP TO 56 POINTS FOR **EXCHANGE PROGRAMS**

**33 POINTS**

**EXAM AVERAGE\***

SEE THE CALL FOR MORE INFORMATION

**10 POINTS**

**PORTFOLIO**

**10 POINTS**

**CURRICULUM & MOTIVATIONAL LETTER**

**FOR DOUBLE DEGREES STUDENTS ONLY:**

**10 POINTS**

**INTERVIEW (COMPULSORY)**

DEFINED BY THE PROMOTER OF **THE FIRST PREFERENCE**

THIS SCORE WILL REMAIN UNCHANGED FOR THE OTHER CHOICES

\*STUDENTS WHO HAVE NEVER PARTICIPATED IN AN EXCHANGE WILL RECEIVE A BONUS OF 3 POINTS

IN SOME CASES THE PROMOTER CAN INDICATE A STUDENT AS “**NOT SUITABLE**”, THIS CONDITION IMPLIES THE EXCLUSION FROM THE RANKING

# SELECTIONS - EXCHANGE PROGRAMS

## 4. EXCHANGE PROGRAMS **DO NOT FORESEE AN INTERVIEW**

BUT WE ADVISE STUDENTS TO TAKE PART IN THE ORIENTATION ACTIVITIES PROMOTED BY THE SCHOOL AND THE **PROMOTERS** DURING THE **MEETINGS “EXCHANGE YOUR MIND”**.

**SELECTIONS** WILL BE DONE ONLY THROUGH **THE DOCUMENTS** (CV,PORTFOLIO,EXAM AVERAGE) UPLOADED ONLINE DURING THE APPLICATION.

REMEMBER TO UPLOAD CV AND PORTFOLIO BEFORE THE DEADLINE AND PAY ATTENTION TO DOCUMENTS SIZE.

## **PERIOD OF SELECTIONS AROUND FEBRUARY 2020**

DATES WILL BE PUBLISHED SOON ON :

<https://www.polimi.it/en/services-and-opportunities/experience-abroad/study-mobility/erasmus/call/>

<https://www.polimi.it/it/servizi-e-opportunita/studiare-allestero/mobilita-per-studio/erasmus/bando/>

# SELECTIONS - DOUBLE DEGREE

## 4. GET READY TO DO THE INTERVIEW OF SELECTION

THE INTERVIEW AIM IS TO VERIFY THE ATTITUDE TO DO THE INTERNATIONAL MOBILITY

**THE INTERVIEW IS DONE BY THE PROMOTER OF THE SCHOOL SPECIFIED IN THE FIRST PREFERENCE**

THE SCORE OF THE INTERVIEW IS THE SAME FOR ALL THE PREFERENCES.

**PERIOD OF SELECTIONS AND INTERVIEWS AROUND JANUARY 2020 \***

DATES WILL BE PUBLISHED SOON ON :

<https://www.polimi.it/en/services-and-opportunities/experience-abroad/study-mobility/erasmus/call/>

<https://www.polimi.it/it/servizi-e-opportunita/studiare-allestero/mobilita-per-studio/erasmus/bando/>

**MAKE SURE TO BE IN MILAN!**

\*INTERVIEWS ARE COMPULSARY FOR THE DOUBLE DEGREE

# SELECTIONS - SPECIAL PROGRAMS

## MEDES - JEFFERSON - FIT

### 4. THOSE PROGRAMS **FORESEE AN INTERVIEW**

THE INTERVIEW AIM IS TO VERIFY THE ATTITUDE TO DO THE INTERNATIONAL MOBILITY.  
THE INTERVIEW IS **WITHOUT SCORE**.

**THE INTERVIEW IS WITHOUT A SCORE BUT IT IS IMPORTANT FOR THE SELECTIONS.**

### **PERIOD OF SELECTIONS AND INTERVIEWS FROM LATE JANUARY TO EARLY FEBRUARY 2020**

DATES WILL BE PUBLISHED SOON ON :

<https://www.polimi.it/en/services-and-opportunities/experience-abroad/study-mobility/erasmus/call/>  
<https://www.polimi.it/it/servizi-e-opportunita/studiare-allestero/mobilita-per-studio/erasmus/bando/>

**MAKE SURE TO BE IN MILAN !**

# PARTNER SCHOOLS SELECTIONS

## 5. ONCE YOU HAVE BEEN SELECTED BY POLIMI **YOUR JOB IS NOT FINISHED!**

MOST OF THE PARTNER SCHOOLS HAVE **THEIR OWN SELECTION** AND ANALYSE THE CANDIDACY OF THE INCOMING EXCHANGE STUDENTS

THIS MEANS THAT YOU NEED TO PREPARE **A VERY GOOD PORTOFOLIO** FOR THE FINAL STEPS.

### **MAKE SURE TO**

- **CHECK THE WEBSITE** OF THE SCHOOL TO FIND ALL THE PORTFOLIO AND DOCUMENTS REQUISITS
- PREPARE YOUR PORTOLIO ACCORDING TO THE **COURSE YOU ARE APPLYING TO**
- **ASK TO YOUR PROMOTER PROFESSOR** TO CHECK YOUR PORTFOLIO

# MORE DETAILS ABOUT THE CALL

**!!** TO KNOW MORE ABOUT **HOW TO APPLY, REQUIREMENTS, DEADLINES AND SELECTION PROCESS** COME TO THE **EXCHANGE OFFICE PRESENTATIONS**.

**11<sup>TH</sup> DECEMBER**

**ITALIAN // 12.15 - 14.00 // AULA CASTIGLIONI**

**18<sup>TH</sup> DECEMBER**

**ENGLISH // 12.15 - 15.00 // AULA CASTIGLIONI**

**MORE DETAILS SOON ON**

<https://www.polimi.it/en/services-and-opportunities/experience-abroad/study-mobility/erasmus/call/>

<https://www.polimi.it/it/servizi-e-opportunita/studiare-allestero/mobilita-per-studio/erasmus/bando/>

# CONTACTS FOR EXCHANGE PROGRAMS

## EXCHANGE OFFICE - BOVISA

SIMONA BENVENUTO - LIVIA FABBRINI  
SIMONA RODELLA - ELISA ZAPPA  
[exchange-bovisa@polimi.it](mailto:exchange-bovisa@polimi.it)

VIA LAMBRUSCHINI 15, BUILDING B20, CAMPUS LA MASA

### OFFICE HOURS:

MONDAY, TUESDAY, WEDNESDAY, THURSDAY **10/12:30** | FRIDAY **CLOSED**

## RELÉ OFFICE

ANNE SCHOONBRODT – CAROLINA CRUZ  
[rele@polimi.it](mailto:rele@polimi.it)

# CONTACTS FOR DOUBLE DEGREE PROGRAMS

## STUDESK DOUBLE DEGREES DESIGN

[doubleddegrees.design@polimi.it](mailto:doubleddegrees.design@polimi.it)

VIA LAMBRUSCHINI 15, BUILDING B20, CAMPUS LA MASA

### OFFICE HOURS:

MONDAY, TUESDAY, WEDNESDAY, THURSDAY 10/12:30 | FRIDAY CLOSED

## THE PROMOTERS OF THE DOUBLE DEGREE

TONGJI prof Davide Fassi

LES ECOLES CENTRALES prof Barbara Del Curto

TSINGHUA prof Luca Guerrini

SAO PAOLO UNIVERSITY prof Mario Bisson, Matteo Ingrammo

UNAL prof Marisa Galbiati

XI'AN JIAOTONG, Lucia Rampino

PONTIFICIA UNIVERSIDAD CATOLICA DE CHILE, Valeri Bucchetti

### RELÉ OFFICE

ANNE SCHOONBRODT – CAROLINA CRUZ

[rele@polimi.it](mailto:rele@polimi.it)