



POLITECNICO
MILANO 1863

SCUOLA DEL DESIGN

INTERNATIONAL EXPERIENCES

OPENDAY
LAUREE MAGISTRALI

WHAT IS THE INTERNATIONAL MOBILITY PROGRAM?



EUROPE
ERASMUS+

EXTRA EU
BILATERAL AGREEMENTS

WORLDWIDE

23 PARTNER COUNTRIES

20 PARTNER COUNTRIES

153 PARTNER SCHOOLS

74 PARTNER SCHOOLS

SCHOLARSHIPS GARANTED
BY ERASMUS+ PROGRAM

SCHOLARSHIPS GARANTED
BY MIUR AND POLITECNICO DI MILANO FOUNDS

WHAT IS THE INTERNATIONAL MOBILITY PROGRAM?

ERASMUS

EXCHANGE FROM 3 UP TO 12 MONTHS **WITHIN UE** AT BSc AND MSc LEVEL

EXTRA - EU

EXCHANGE FROM 3 UP TO 12 MONTHS **OUTSIDE UE** AT BSc AND MSc LEVEL

MEDES

EXCELLENCE PROGRAM WITH 2 YEARS OF EXCHANGE AT 3rd YEAR BSc AND 1st MSc LEVELS (application only for students at 2nd year of Bachelor)

JEFFERSON U

JEFFERSON&POLIMI INTERNATIONAL **MASTER IN FASHION DESIGN**
(application only for students at 3rd year in fashion design)

FIT

EXCHANGE AT FASHION INSTITUTE OF TECHNOLOGY - NEW YORK
(application only for students at 3rd year in fashion design)

DOUBLE DEGREES

PROGRAM TO OBTAIN A **DOUBLE DEGREE** (POLIMI & PARTNER SCHOOL) AT MSc LEVEL

<http://www.design.polimi.it/en/international-area/international-mobility/>

WHAT IS THE INTERNATIONAL MOBILITY PROGRAM?

LEARNING
SOFT SKILLS WORK
EXPERIENCE LIFE EMPLOYABILITY PROJECTS LANGUAGES
LANGUAGES OPENNESS
FLEXIBILITY CURIOSITY
SOCIETY NETWORK RESEARCH
AREAS CURIOSITY SHARE CHANCE CHANCE TRAVEL FUTURE
CURRICULUM FUN
WORLD

CURIOSITY

LEARNING

PEOPLE



THE SUCCESS OF THE ERASMUS PROGRAM

30

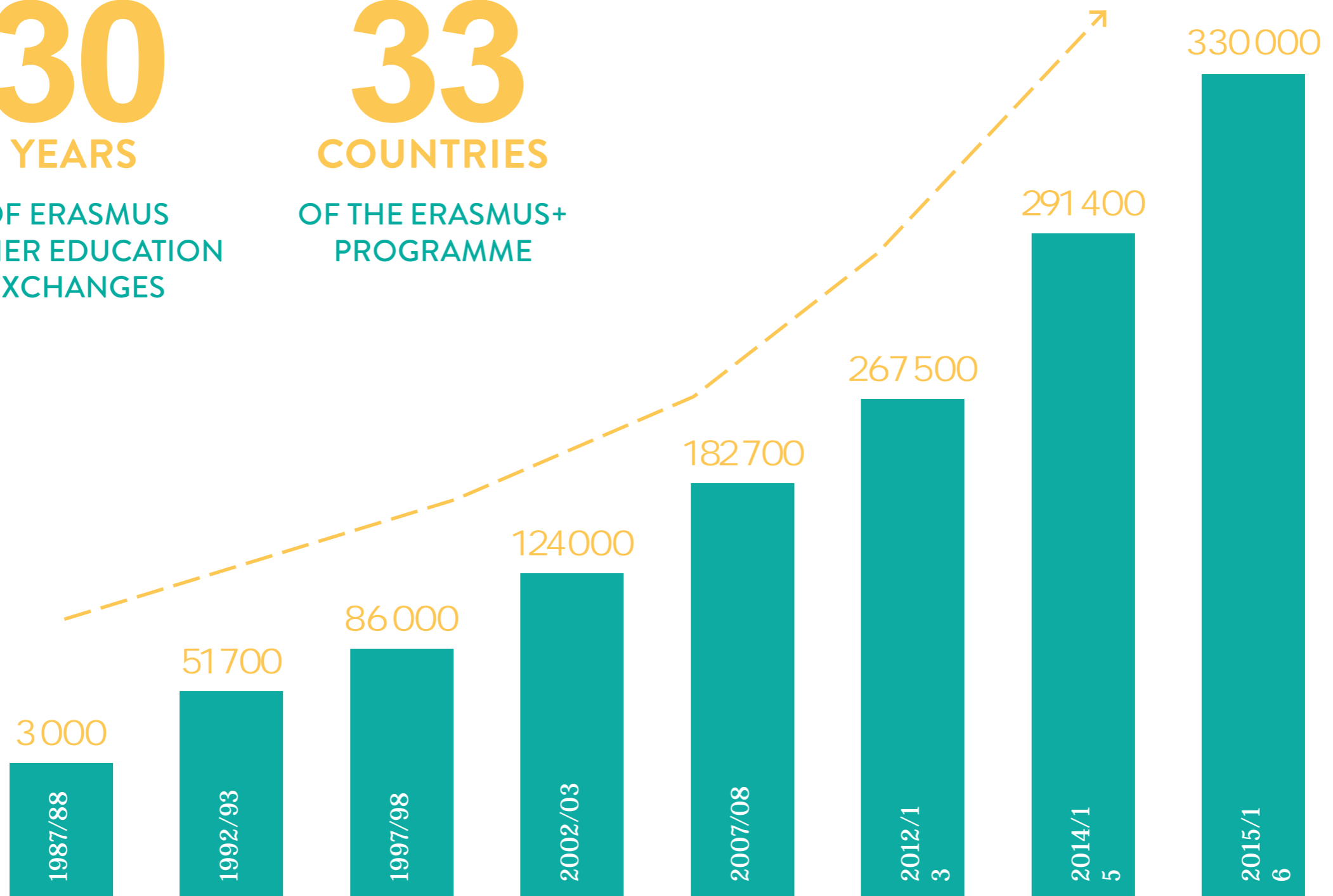
YEARS

OF ERASMUS
HIGHER EDUCATION
EXCHANGES

33

COUNTRIES

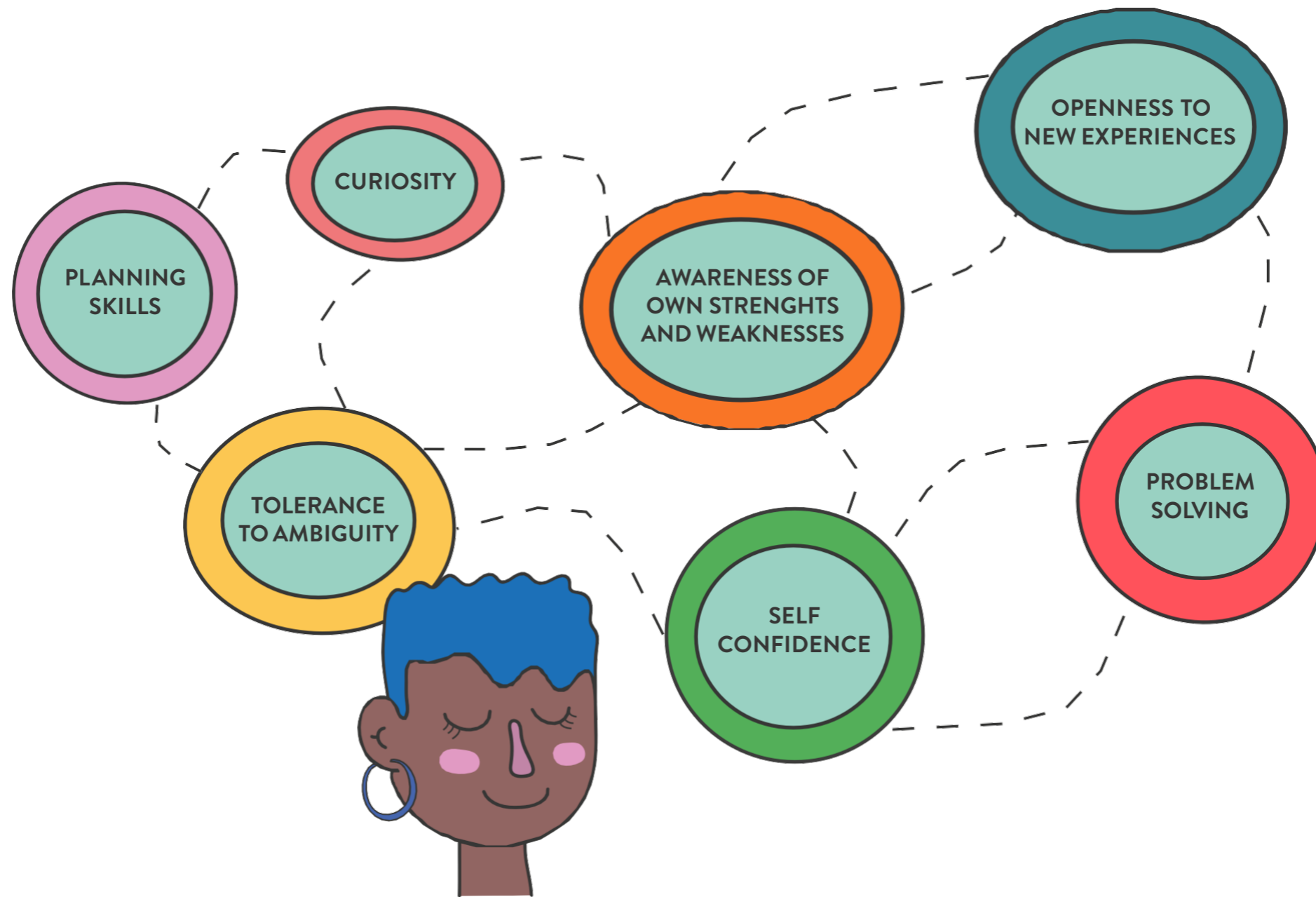
OF THE ERASMUS+
PROGRAMME



DEVELOP YOUR SKILLS

PERSONALITY TRAITS

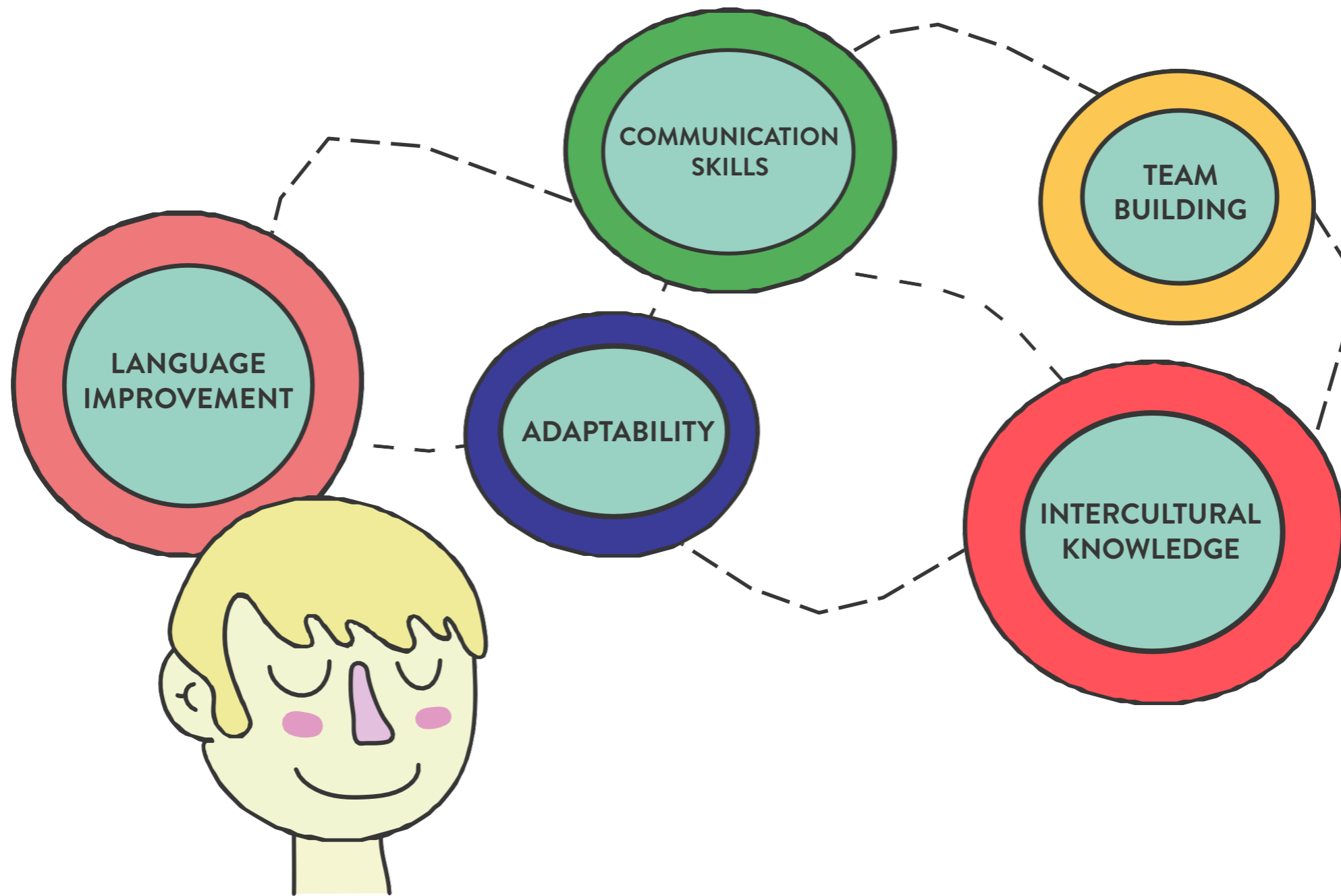
STUDY ABROAD HELP STUDENTS BUILD **VALUABLE SKILLS** FOR THE JOB MARKET



DEVELOP YOUR SKILLS

SOFT SKILLS

THE EXPERIENCE ABROAD ALLOW YOU **TO BETTER ADAPT** TO DIVERSE WORK ENVIRONMENTS



PROFESSIONAL OPPORTUNITIES



EMPLOYERS CONSIDER THE **EXPERIENCE ABROAD**
AN IMPORTANT FACTOR FOR **EMPLOYABILITY**

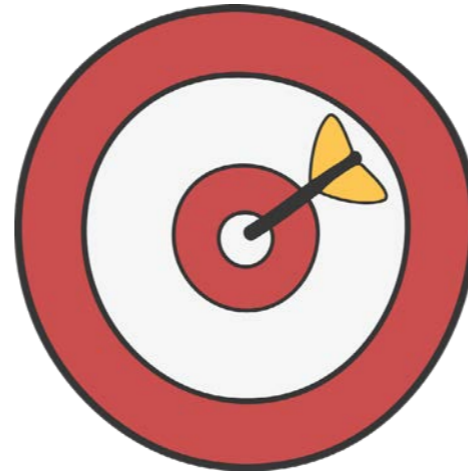
37%

IN 2006

64%

IN 2013

PROFESSIONAL OPPORTUNITIES

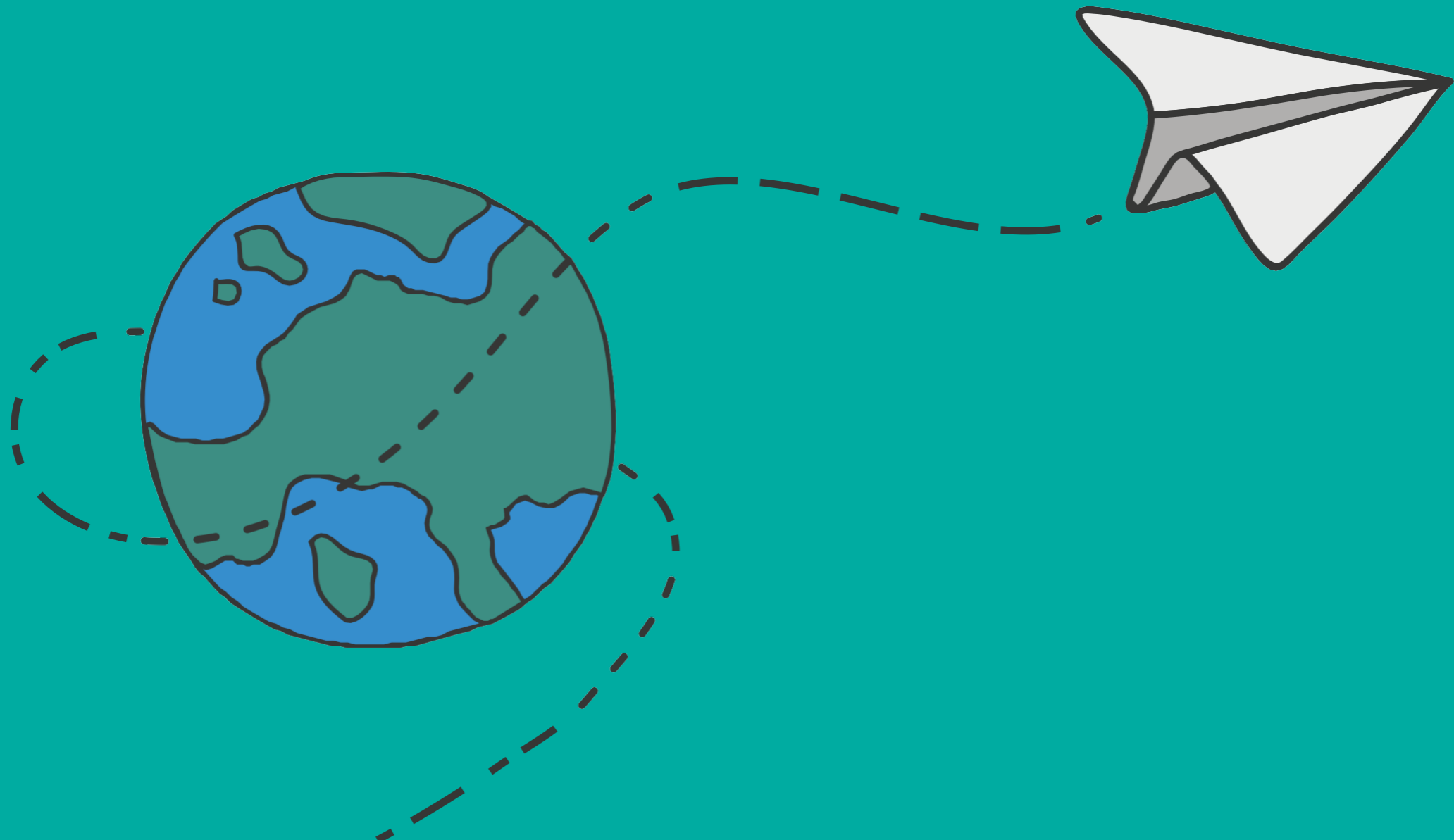


STATISTICS SHOW THAT AFTER GRADUATION
STUDENTS WITH AN EXPERIENCE ABROAD
FIND JOBS BEFORE AND MORE EASILY
COMPARED TO THEIR COLLEAGUES

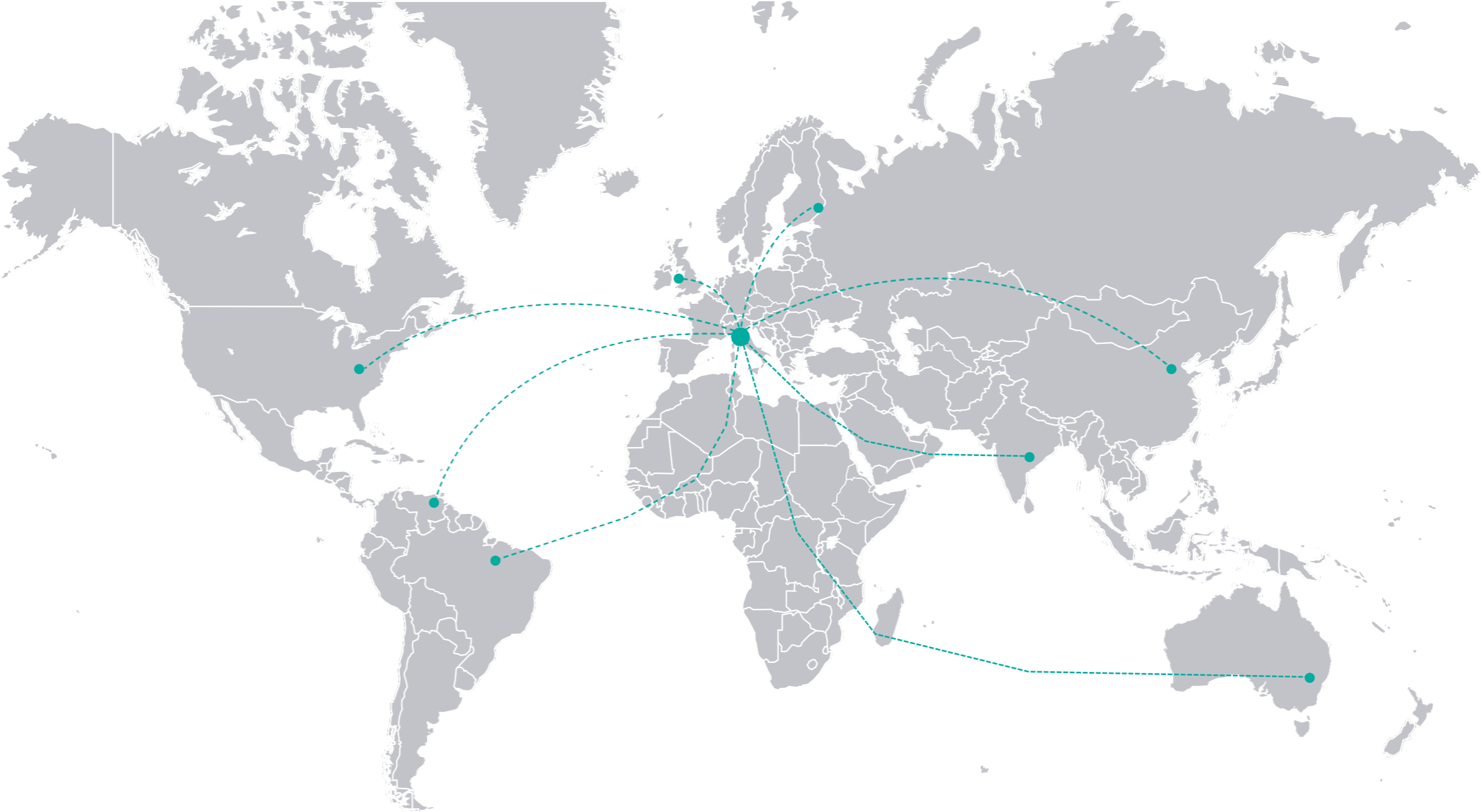
1/3

ERASMUS+ TRAINEES
ARE OFFERED A POSITION
BY THE COMPANY THEY TRAINED IN

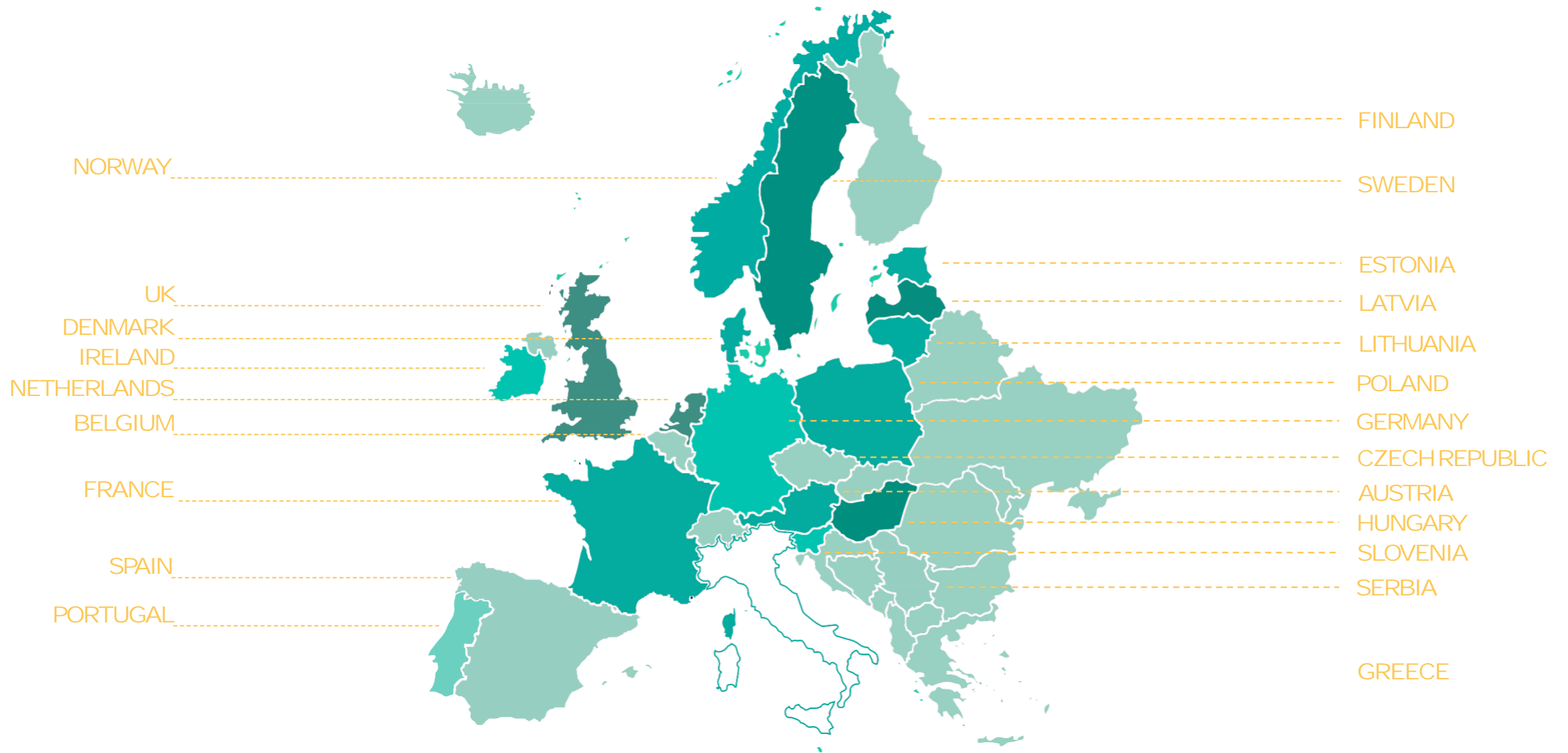
COUNTRIES



BUILD AN INTERNATIONAL NETWORK



EUROPE FROM WEST TO EAST



EUROPE

NORWAY



NETHERLANDS



AUSTRIA



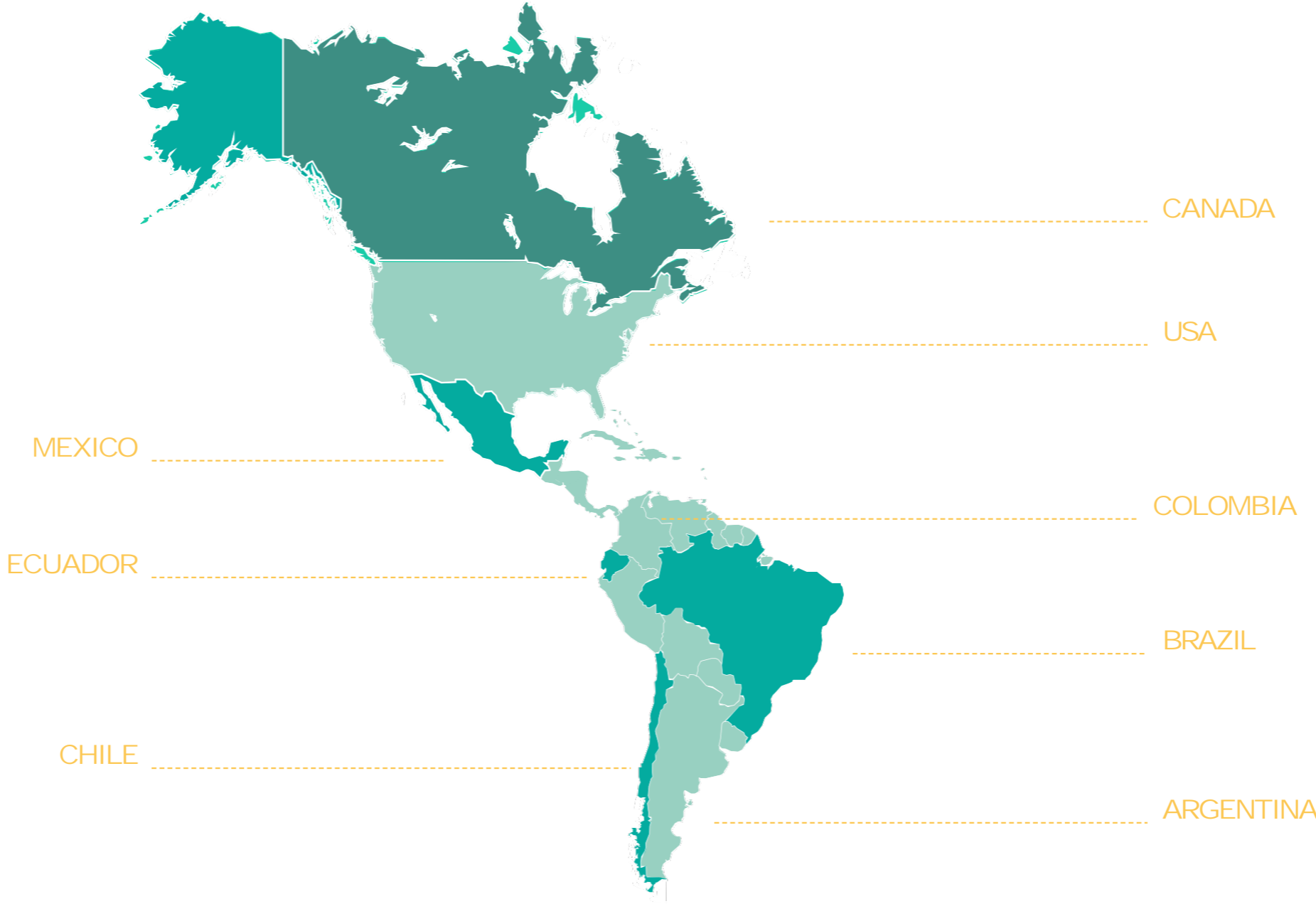
TURKEY



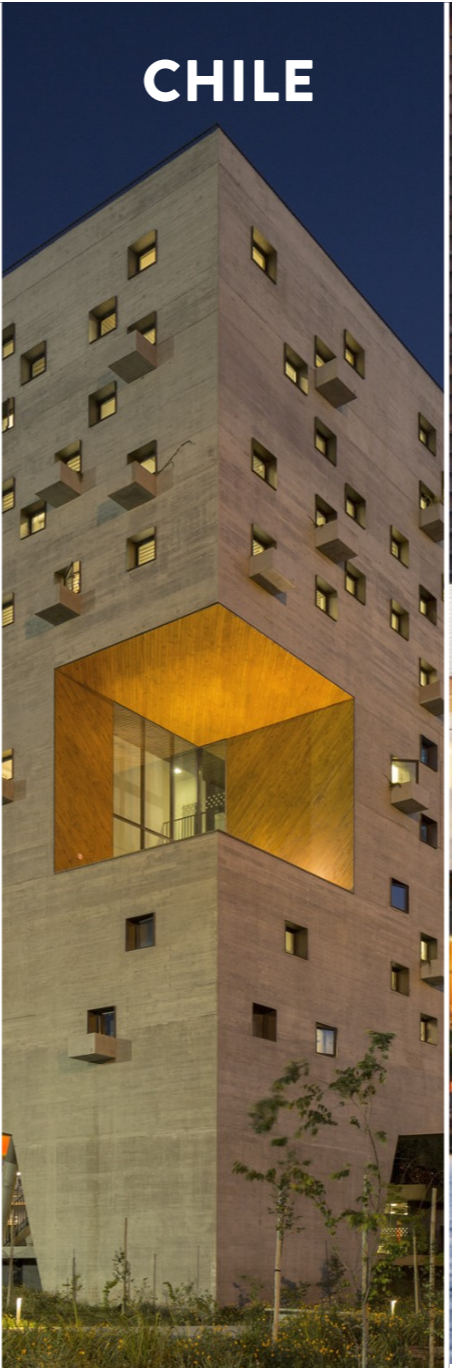
POLAND



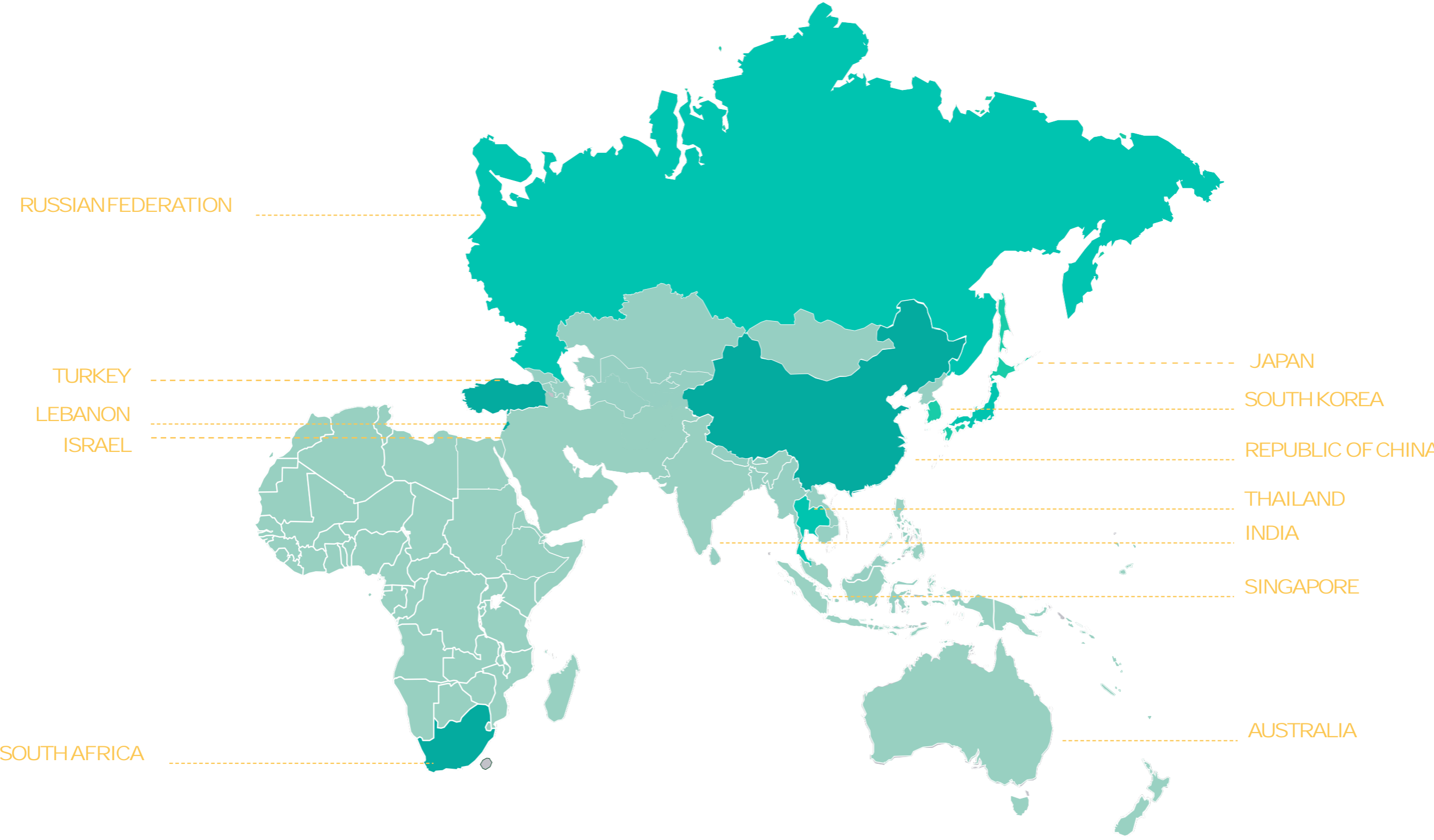
AMERICA FROM NORTH TO SOUTH



AMERICA



AFRICA, ASIA & OCEANIA



AFRICA, ASIA & OCEANIA



WHO?

ANY STUDENT

BOTH ITALIAN AND FOREIGN STUDENTS
REGULARLY ENROLLED AT POLIMI

BSc STUDENTS (LAUREA)
MSc STUDENTS (LAUREA MAGISTRALE)

**STUDENTS ENROLLED IN INDIVIDUAL COURSES (CORSI SINGOLI) WAITING TO
ENTER IN THE MSc**

WHAT & WHEN?

Communication
Design

Integrated
Product Design

Design for the
Fashion System

1st YEAR

(Applying in 3rd year BSc)



2nd semester

for

* ERASMUS

* EXTRA EU

*Only for students in
continuity*

2nd YEAR

(Applying in 1st year MSc)



2nd semester

for

* ERASMUS

* EXTRA EU

**DOUBLES
DEGREE**

* Maximum **12 MONTHS** in total

* Maximum **42 CURRICULAR CREDITS** can be validated

WHAT & WHEN?

Product Service
System Design

Design &
Engineering

2nd YEAR

(Applying in 1st year MSc)



2nd semester

for

* **ERASMUS**

* **EXTRA EU**

**DOUBLES
DEGREE**

* Maximum **12 MONTHS** in total

* Maximum **42 CURRICULAR CREDITS** can be validated

WHAT & WHEN?

Interior and
Spatial Design

Digital and
Interaction Design

2nd YEAR

(Applying in 1st year MSc)



2nd semester

And/or



2nd semester

for

* ERASMUS

* EXTRA EU

for

* ERASMUS

* EXTRA EU

DOUBLES
DEGREES

* Maximum **12 MONTHS** in total

* Maximum **42 CURRICULAR CREDITS** can be validated

WHAT & WHEN?

APPLYING IN THE MSc 2nd YEAR

ERASMUS TRAINEESHIP

YOU HAVE THE CHANCE TO DO A **TRAINEESHIP** PERIOD IN AN EUROPEAN COUNTRY.

THE CALL IS NOT THE SAME OF THE ERASMUS PROGRAM.

YOU CAN PARTECIPATE ANSWERING A **SPECIFIC CALL IN MAY.**

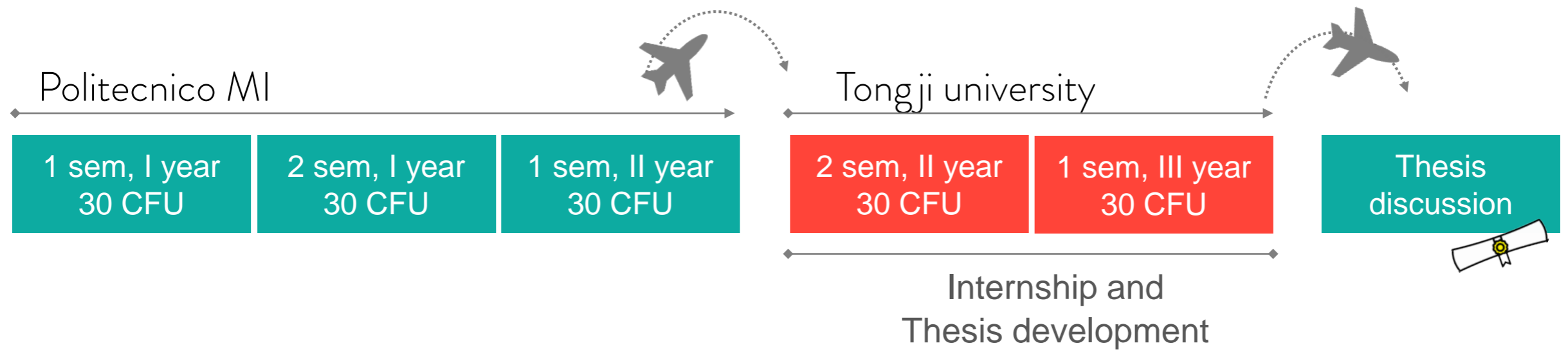
WHAT IS THE DOUBLE DEGREE PROGRAM?

DOUBLE DEGREE PROGRAM

THE DOUBLE DEGREE PROGRAMS ALLOW YOU TO SPEND TIME STUDYING ABROAD AND ATTEND COURSES THAT COUNT TO OBTAIN THE **ITALIAN DEGREE AND A FOREIGN DEGREE** OF THE SAME LEVEL.

SHANGHAI, CHINA

Tongji University



Politecnico MI: 90 CFU
Tongji university: 60 CFU

Promotore: Davide Fassi

PSSD

Interior

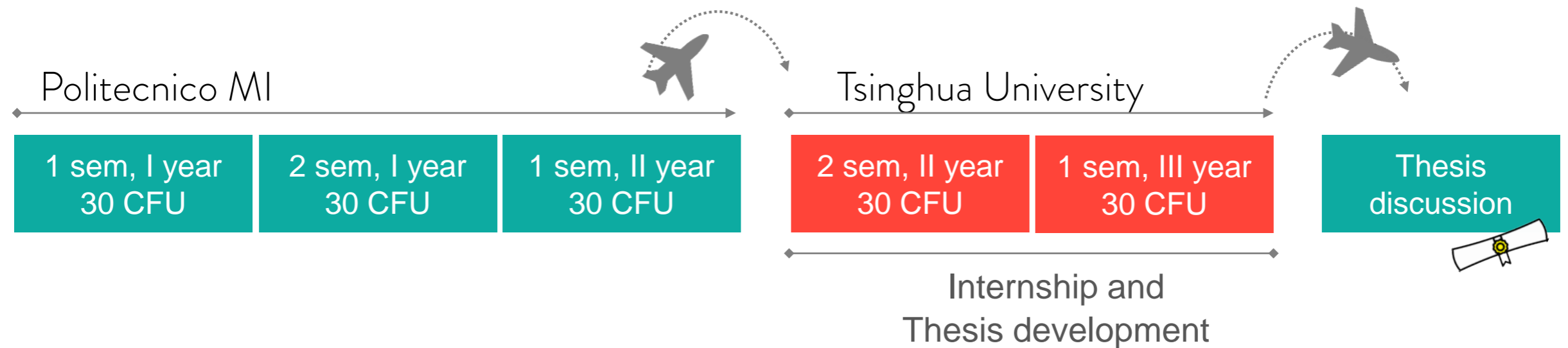
Product

Communication

DID

SHANGHAI, CHINA

Tsinghua University



Politecnico MI: 90 CFU

Tsinghua University: 60 CFU

Promotore: Luca Guerrini

Interior

Product

Communication

Fashion

SAO PAULO, BRAZIL

Universidad du Sao Paolo



Politecnico MI: 60 CFU

Universidad du Sao Paolo: 120 CFU

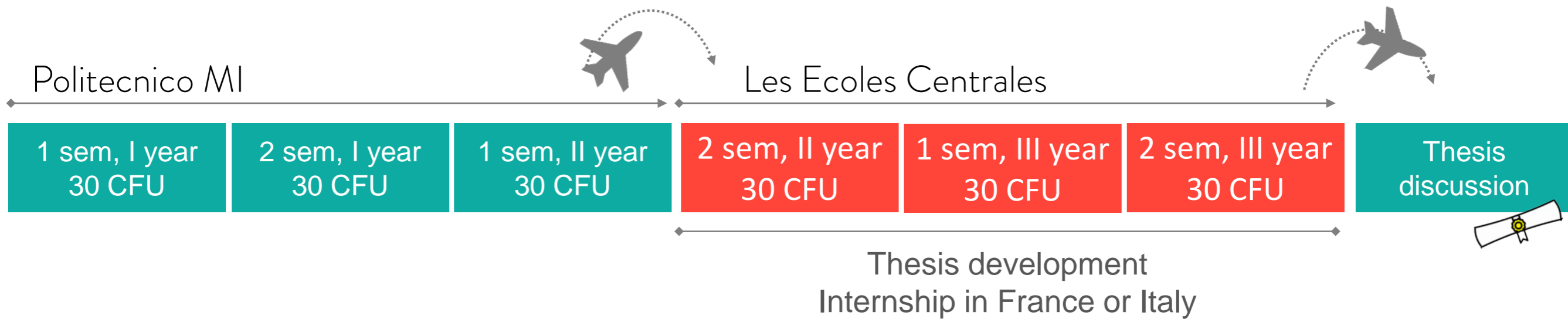
Promotore: Mario Bisson

Product

Communication

LILLE/LYON/MARSEILLE/NANTES/PARIS, FRANCE

Les Ecoles Centrales



Politecnico MI: 90 CFU

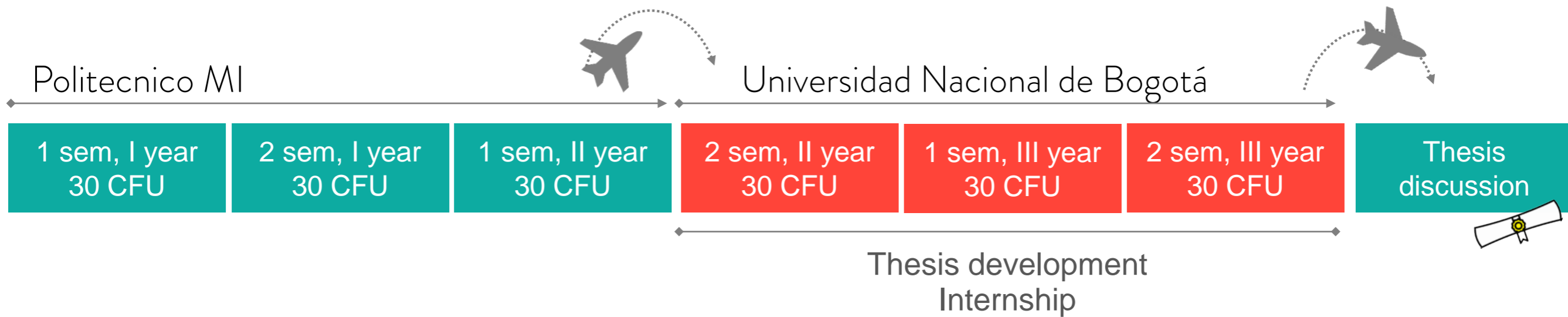
Les Ecoles Centrales: 90 CFU

Promotore: Barbara Del Curto

D&E

BOGOTA, COLOMBIA

Universidad Nacional de Bogotá



Politecnico MI: 90 CFU

Universidad Nacional de Bogotá: 90 CFU

Promotore: Marisa Galbiati

Communication

WHERE TO GET INFO ABOUT PARTNER SCHOOLS

MANIFESTO

SELECT YOUR COURSE AND CLICK ON **INTERNAZIONALIZZAZIONE**

[MANIFESTO DEGLI STUDI](#)

INTERNATIONAL AREA SCHOOL

-CONSULT THE **PARTNER SCHOOLS LIST**

-READ **THE REPORTS** FROM LAST YEARS STUDENTS

<http://www.design.polimi.it/en/international-area/international-mobility/>

PARTNER SCHOOL

VISIT THE PARTNERS SCHOOL WEBSITE

CONTACTS

PROMOTER PROFESSORS THE PARTNER SCHOOL YOU'RE INTERESTED IN

EXCHANGE OFFICE: EXCHANGE-BOVISA@POLIMI.IT RELÉ OFFICE: RELE@POLIMI.IT

CONTACTS

EXCHANGE OFFICE - BOVISA

Simona Benvenuto- Livia Fabbrini

Simona Rodella- Elisa Zappa

exchange-bovisa@polimi.it

Via Lambruschini 15, building B20, campus La Masa

OFFICE HOURS:

Monday,uesday Wednesday, Thursday 10/12:30 | Friday CLOSED

RELÉ OFFICE

Anne Schoonbrodt – Carolina Cruz

rele@polimi.it

**LIFE IS A JOURNEY,
EXCHANGE YOUR MIND!**

